



Extra Compact Unit with Host of Functions

HANDYSURF E-35A



AI Function Achieves Easy Operability

- The AI function (patent pending) automatically sets the ideal values for measuring range, evaluation length, cut-off value and recording magnification (when printer is used) according to the surface being measured.

Use Anywhere in the World

- The E-35A supports JIS (2001/1994/1982), ISO, DIN, ASME and CNOMO standards, and can be switched between English, Japanese, German, Italian, French, Spanish and Portuguese. In addition, the unit satisfies the European Directives for the CE Marking.



Directly Transfer Data to PC

- The standard RS-232C serial port allows measuring conditions, parameter values and profile curve data to be directly transmitted to a PC.

Data Storage/Rechargeable Battery

- Ten different data items can be stored in the internal memory, and the measured data can be called at any time. Both the HANDYSURF and printer have built-in rechargeable batteries, making them ideal for on-site measurements where a power source is not readily available.

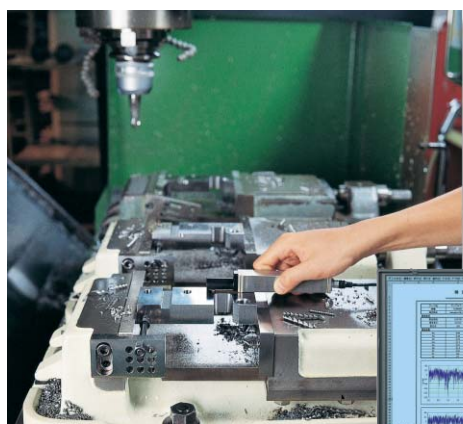
Measurements from Any Orientation

- The compact lightweight HANDYSURF unit can be used to make measurements in a horizontal, vertical, tilted or any other orientation. The display and drive units can be used together as a one-piece instrument, or separated for measurement purposes according to individual requirements.

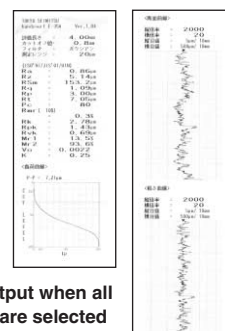
Replaceable Displacement Pickup

- The displacement pickup enables exact and faithful measurement of surface roughness. Since it is replaceable, dedicated optional pickups can be used for extra small holes and deep grooves, facilitating a diverse range of measurements.

7-language capability, supports world standards, rechargeable battery, PC compatible **Worldwide Compatibility**



Compact printer II

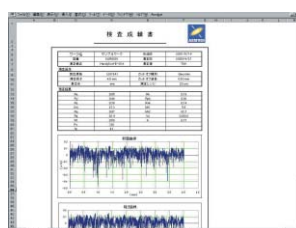


Sample output when all functions are selected



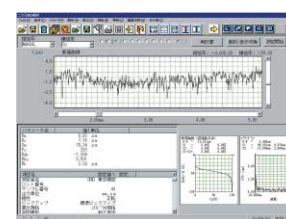
PC Compatible

* Notebook PC connection cable (E-SC-S248A) with macro program is option.



Inspection Report Generation

Data can be read by Excel for generation of an inspection report.



TIMS Light (option)

TIMS Light integrated ACCRETECH measuring system enables versatile advanced analysis.

Specifications

| Model | | HANDYSURF E-35A |
|----------------------|---------------------|---|
| Measuring range | Z axis (vertical) | ±160 μm |
| | X axis (horizontal) | 12.5 mm |
| Resolution | Z axis (vertical) | 0.01 μm / ±20 – 0.08 μm / ±160 μm |
| Analysis items | Standards supported | Complies with JIS-2001, JIS-1994, JIS-1982, ISO-1997, ISO-1984, DIN-1990, ASME-1995 and CNOMO. |
| | Parameters | JIS-2001 motif Pt, Ra, Rq, Rz, Rzmax, Rp, Rt, R3z, RSm, Pc, Rk, Rpk, Rvk, Mr1, Mr2, VO, K, Rmr R, Rx, AR, W, Wx, AW, Wte |
| | Evaluation curves | Section profile curve, roughness curve, ISO 13565 special curve, roughness motif curve, waviness motif curve, envelope waviness curve |
| Filter | Cut-off method | Gaussian Filter, 2RC filter |
| | Cut-off value | λc: 0.08, 0.25, 0.8, 2.5 mm λs: 2.5, 8 μm |
| Evaluation length | Fixed mode | Cut-off value × 5 |
| | Arbitrary mode | 0.4 – 12.5 mm (Unit: 0.1 mm) |
| Drive speed | | 0.6 mm/s (return speed 1 mm/s) |
| Pickup | Sensing method | Differential inductance (displacement type) |
| | Stylus | Diamond, 90° cone, 5 μm R |
| | Measuring force | 4 mN or less |
| | Skid | Sapphire, 32 mm R (trace direction) |
| Power source | | Built-in rechargeable battery (charged with AC adapter) |
| Power consumption | | Approx. 1 VA |
| Weight | | Approx. 600 g |
| External dimensions | | 210 (W) × 70 (D) × 60 (H) mm |
| Standard accessories | | Reference specimen (E-MC-S24B), rear adjustment piece (E-WJ-S64A), extension cable (E-SC-S255A), Handy case (E-MA-S35A), AC adapter, instruction manual |

● Printer (option)

| | | |
|-------------------------|--|---|
| Name | Compact Printer II | |
| Model | E-RC-S25A | |
| Printing method | Thermal line dot | |
| Recording curves | Section profile curve, roughness curve, load curve, roughness motif curve, waviness motif curve, envelope waviness curve | |
| Recording magnification | Vertical direction (V) | ×100, ×200, ×500, ×1K, ×2K, ×5K, ×10K, AUTO |
| | Horizontal direction (H) | ×1, ×2, ×5, ×10, ×20, ×50, ×100, ×200, AUTO |
| Weight | Approx. 390 g | |
| External dimensions | 140 (W) × 100 (D) × 40 (H) mm | |
| Accessories | Recording paper: E-CH-S25A, Connection cable: E-SC-S245A | |

* Excel is a trademark of Microsoft Corporation.